

# T-LOCK SHOE KIT INSTRUCTIONS

## Items Needed for Installing T-Lock Shoe Kit:

### T-LOCK SHOE KIT - #SPCK

T-Lock Shoe Inserts in 3 sizes with T-Lock Base.

### Double-sided Tape

Double sided tape needed for securing shoes to the platen.

## Instructions for installing T-Lock Shoe Kit:

Below are instructions for installing the T-Lock Shoe Kit.



**Step 1:**  
Insert the T-Lock Base into the platen stem of the Brother DTG printer.



**Step 2:**  
Adjust the height of the platen and tighten the locking lever.

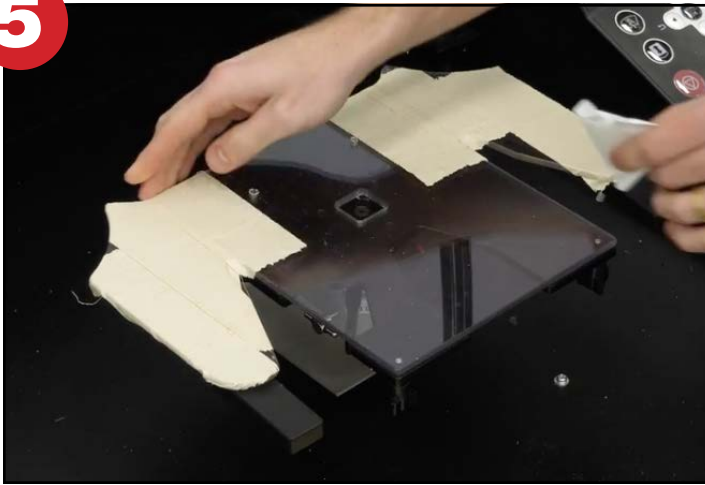


**Step 3:**  
Insert the T-Lock Shoe Insert into the T-Lock Base.



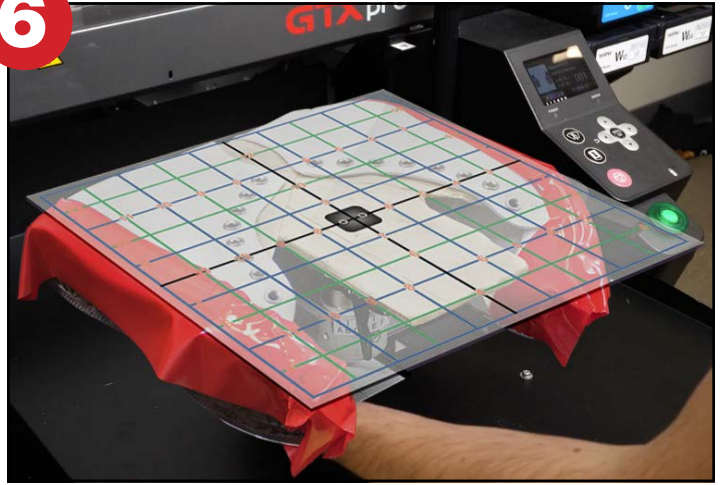
**Step 4:**  
Secure the T-Lock Shoe Insert by rotating the center piece in the T-Lock brackets.

5



**Step 5:**  
Apply double sided tape needed for securing shoes.

6

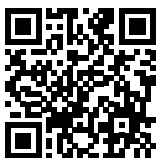


**Step 6:**  
After loading shoes on the platen, insert the Alignment Jig in the square cut-out on the Shoe Platen insert to be able to align the artwork in your graphic software program to match up with the Alignment Jig. Remove the Alignment Jig before printing.

**Click or Scan Below to View  
the T-Lock Shoe Insert  
Video**

**Click or Scan Below to View  
the GTX T-Lock Assembly  
Video**

**Video**



**T-Lock Shoe Insert Video**  
This video shows how to install and print on shoes with a T-Lock Shoe Insert.

**Video**



**GTX T-Lock Assembly Video**  
Learn how to assemble the T-Lock base.